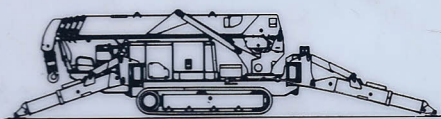


MINI-CRAWLER CRANE MC-405C

MC-405C Rated Total Load Chart

With outrigger extend to maximum



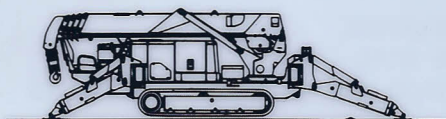
Crane work with outrigger extended to maximum	Boom 1 and Boom 1+2													
	Working radius (m)	Less than 2.7	3.5	4.0	5.0	6.0	7.0	7.22						
	Rated total load(kg)	3830	3030	2580	2030	1680	1380	1330						
Crane work with outrigger extended to medium	Boom 1+2+3+	When boom 3 is extended to any extent whatsoever, crane work should be carried out with the performance of boom configuration of 1+2+3.												
	Working radius (m)	Less than 3.5	4.0	5.0	6.0	7.0	8.0	9.0	10.18					
	Rated total load(kg)	3030	2580	2030	1680	1380	1130	880	580					
Crane work with outrigger extended to minimum	Boom 1+2+3+4	When boom 4 is extended to any extent whatsoever, crane work should be carried out with the performance for boom configuration of 1+2+3+4.												
	Working radius (m)	Less than 4.0	4.5	5.0	6.0	7.0	8.0	9.0	10.0	11.0	12.0	13.09		
	Rated total load(kg)	2230	1930	1730	1400	1180	1030	930	830	690	530	430		
Crane work with outrigger extended to maximum	Boom 1+2+3+4+5	When more than one half of marking is exposed from boom 4, crane work should be carried out with the performance for boom configuration of 1+2+3+4+5.												
	Working radius (m)	Less than 5.0	5.5	6.0	7.0	8.0	9.0	10.0	11.0	12.0	13.0	14.0	15.0	16.0
	Rated total load(kg)	1130	980	910	760	650	600	550	490	440	380	320	260	210

With outrigger extended to medium



Crane work with outrigger extended to medium	Boom 1 and Boom 1+2													
	Working radius (m)	Less than 2.7	3.5	4.0	5.0	6.0	7.0	7.22						
	Rated total load(kg)	3830	3030	2580	1880	1430	1160	1120						
Crane work with outrigger extended to medium	Boom 1+2+3	When boom 3 is extended to any extent whatsoever, crane work should be carried out with the performance of boom configuration of 1+2+3.												
	Working radius (m)	Less than 3.5	4.0	5.0	6.0	7.0	8.0	9.0	10.18					
	Rated total load(kg)	3030	2580	1880	1430	1130	880	740	490					
Crane work with outrigger extended to medium	Boom 1+2+3+4	When boom 4 is extended to any extent whatsoever, crane work should be carried out with the performance for boom configuration of 1+2+3+4.												
	Working radius (m)	Less than 4.0	4.5	5.0	6.0	7.0	8.0	9.0	10.0	11.0	12.0	13.09		
	Rated total load(kg)	2230	1830	1630	1330	1080	880	730	530	480	430	330		
Crane work with outrigger extended to medium	Boom 1+2+3+4+5	When more than one half of marking is exposed from boom 4, crane work should be carried out with the performance for boom configuration of 1+2+3+4+5.												
	Working radius (m)	Less than 5.0	5.5	6.0	7.0	8.0	9.0	10.0	11.0	12.0	13.0	14.0	15.0	16.0
	Rated total load(kg)	1130	980	910	730	630	550	480	430	380	330	280	220	180

With outrigger extended to minimum

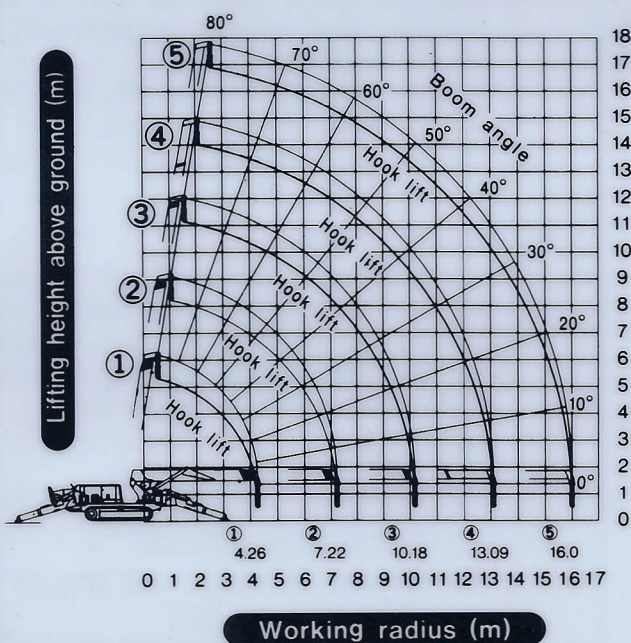


Crane work with outrigger extended to minimum	Boom 1 and Boom 1+2													
	Working radius (m)	Less than 2.7	3.5	4.0	5.0	6.0	7.0	7.22						
	Rated total load(kg)	3830	3030	2580	1680	1180	930	780						
Crane work with outrigger extended to minimum	Boom 1+2+3	When boom 3 is extended to any extent whatsoever, crane work should be carried out with the performance of boom configuration of 1+2+3.												
	Working radius (m)	Less than 3.5	4.0	5.0	6.0	7.0	8.0	9.0	10.18					
	Rated total load(kg)	3030	2580	1680	1180	880	730	580	400					
Crane work with outrigger extended to minimum	Boom 1+2+3+4	When boom 4 is extended to any extent whatsoever, crane work should be carried out with the performance for boom configuration of 1+2+3+4.												
	Working radius (m)	Less than 4.0	4.5	5.0	6.0	7.0	8.0	9.0	10.0	11.0	12.0	13.09		
	Rated total load(kg)	2230	1830	1630	1180	830	680	550	430	380	350	310		
Crane work with outrigger extended to minimum	Boom 1+2+3+4+5	When more than one half of marking is exposed from boom 4, crane work should be carried out with the performance for boom configuration of 1+2+3+4+5.												
	Working radius (m)	Less than 5.0	5.5	6.0	7.0	8.0	9.0	10.0	11.0	12.0	13.0	14.0	15.0	16.0
	Rated total load(kg)	1130	980	880	730	530	450	420	370	330	280	240	190	150

Note:

- Above Rated Total Load Chart is based on level, hard ground. Be careful as your crane may tip over depending on the surface conditions where outrigger is placed.
- The Rated Total Load Chart is based on practical working radius which includes a bend due to loading. Reckless crane work is dangerous even if the load may be within the range shown in this Chart, Always work safely.
- Depending on outrigger extension or grounding, tipping over may occur even by lifting a rated load.
- The rated load includes the weight of hook block (30kg).

MC-405C Operating Range



Note

- The operation range chart does not include boom deflections.
- Condition ④ refers to cases in which half of mark ■ is out from boom ③.