

2.8T CRAWLER

SPIDER CRANE MC285C-3

Specifications

Model		MC285C-3
Crane capacity		2.82t x 1.4m
Max. working radius		8.205m x 0.15t
Max. lifting height (on the ground)		8.7m
Max. lifting height (underground)		-10.1m (4 falls)
Max. lifting height (underground)(optional auxiliary winch)		-100m (single fall)
Winch system	Hook speed	9.3m/min (4 layers, 4 falls)
	Hoist wire rope	IWRC 6 X Fi (29) 0/0, φ7×48.0m
Telescoping system	Type	Fully automatic 5-section pentagonal telescopic boom (3 to 5 section : simultaneous telescoping)
	Boom length	2.535m - 8.575m
	Boom telescoping stroke / time	6.04m / 22sec
Boom hoist system	Hoist angle / time	0 to 80deg / 14.0sec
Slew system	Slew angle / time	360deg / 0.88rpm
Outrigger system	Type	1st stage with flexible stay damper, 2nd stage manual pullout hydraulic cylinder direct acting type
	Max. extended width (between outside of OR adapters)	(Lateral) 4,782mm x (Front) 4,718mm x (Rear) 3,990mm
Travel system	Type	Hydraulic motor driven , stepless speed changer
	Travel speed	0 - 2.2km/h
	Gradability	20deg
	Crawler ground length x width	975mm x 200mm
Engine(diesel)	Ground pressure (MC285CWM-3)	50.0kpa (0.510kgf/cm ²)
	Ground pressure (MC285CWM-E-3)	54.3kpa (0.554kgf/cm ²)
	Model	YANMAR 2TNV70-NMBA
	Displacement	569cc (0.569L)
	Rated output	7.4kw (10.1PS) / 2,500rpm
	Starting method	Electric starting
	Fuel / Fuel tank capacity	Diesel / 12.0L
Motor (MC285CWM-E-3)	Motor model	IKKH-FBK8G-4P-5.5kw
	Motor type	Totally enclosed fan-cooled motor 5.5kw, 4P 380V
	Starting system	Inverter system (30Hz-60Hz)
Remote control system	Type	Radio & paddle type control
Overall length x width x height (MC285CWM-3)		2,800mm x 750mm x 1,470mm
Overall length x width x height (MC285CWM-E-3)		3,285mm x 750mm x 1,470mm (Detachable E-motor)
Machine weight (MC285CWM-3)		1,990kg (2,160kg with Aux winch)
Machine weight (MC285CWM-E-3)		2,160kg (2,330kg with Aux winch)
Safety device	Overwind protection, Angle indicator, Hydraulic safety valve, Wire rope latch, Level, Machine body inclination alarm, EMO switch, Moment limiter, Working status lamp, Data logger, Crane & Outrigger interlock device	
Options	White rubber tracks, Single fall hook, 850kg searcher hook, 900kg auxiliary winch	

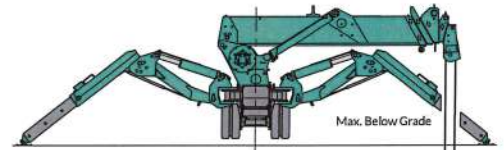
Rated Total Load Chart (4falls)

Outrigger extended to maximum							
2.535m/4.075m Boom		5.575m Boom		7.075m Boom		8.575m Boom	
Working radius(m)	Rated total load(kg)	Working radius(m)	Rated total load(kg)	Working radius(m)	Rated total load(kg)	Working radius(m)	Rated total load(kg)
1.4 or less	2820	3.0 or less	1220	3.6 or less	820	4.0 or less	550
1.5	2520	3.5	970	4.0	740	4.5	400
2.0	1920	4.0	780	4.5	580	5.0	340
2.5	1570	4.5	630	5.0	480	5.5	300
3.0	1220	5.0	530	5.5	430	6.0	270
3.5	970	5.205	530	6.0	380	6.5	230
3.705	920			6.5	350	7.0	200
				6.705	330	7.5	180
						8.0	150
						8.205	150

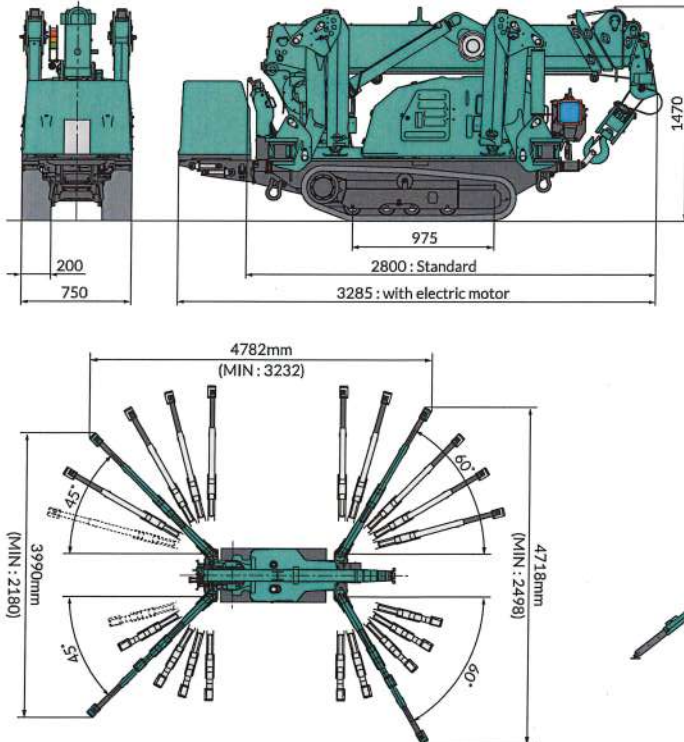
Outrigger extended to other than maximum							
2.535m/4.075m Boom		5.575m Boom		7.075m Boom		8.575m Boom	
Working radius(m)	Rated total load(kg)	Working radius(m)	Rated total load(kg)	Working radius(m)	Rated total load(kg)	Working radius(m)	Rated total load(kg)
1.5 or less	1720	3.0 or less	510	3.6 or less	400	4.0 or less	330
2.0	1070	3.5	410	4.0	330	4.5	280
2.5	630	4.0	330	4.5	280	5.0	230
3.0	520	4.5	280	5.0	230	5.5	180
3.5	390	5.0	200	5.5	180	6.0	160
3.705	350	5.205	200	6.0	160	6.5	130
				6.5	130	7.0	100
				6.705	120	7.5	80
						8.0	70
						8.205	60

* The Rated Total Load Chart is based on actual working radius including boom deflection.
 * The weight of hook block (standard 4 fall / 2 fall-30kg) must be included as part of the load shown in the Rated Total Load Chart.
 * When using two falls hook or single fall hook, use the appropriate four falls Rated Total Load Chart shown above but with a maximum load of : -1410kg for two falls and -710kg for Single fall.

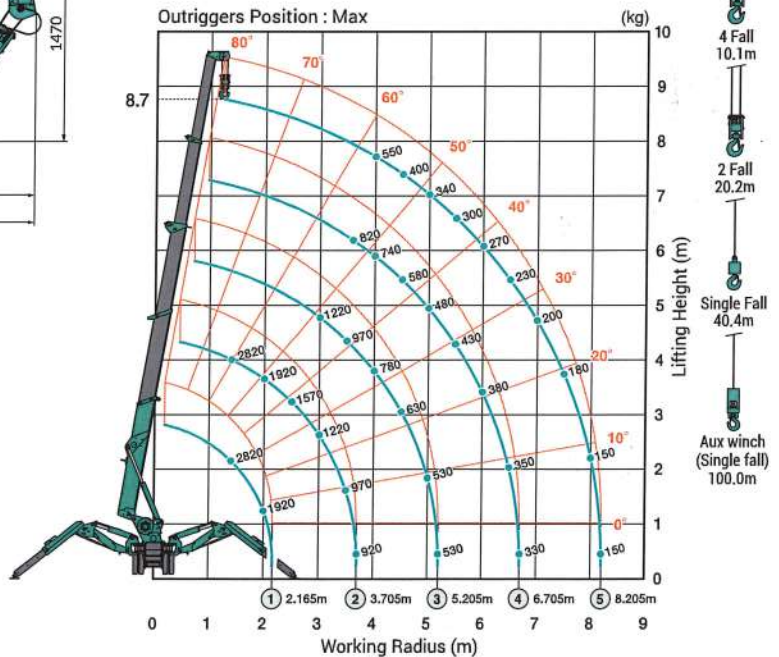
MAX. Reach Below Ground



Dimensions



Working Range Chart (4falls)



* Due to improvements, the specifications are subject to change without notice.

Before use, please read the Operation Manual



MAEDA SEISAKUSHO CO.,LTD.

Head office No.1095, Onbegawa, Shinonoi, Nagano-City, Nagano-Pref. 388-8522 Japan
 TEL:+81(0)26 292 2228 FAX:+81(0)26 293 8499
 URL : www.maedaminicranes.com E-mail : contact@maeda-minicranes.com

3T CRAWLER

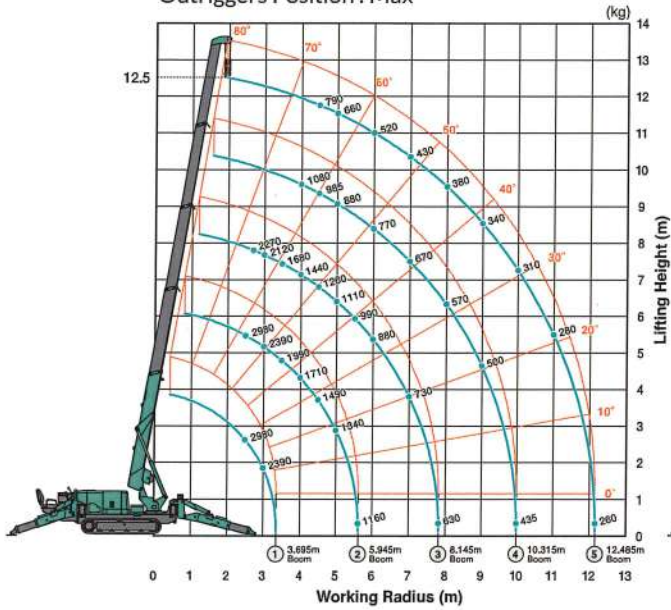


SPIDER CRANE
MC305C-2

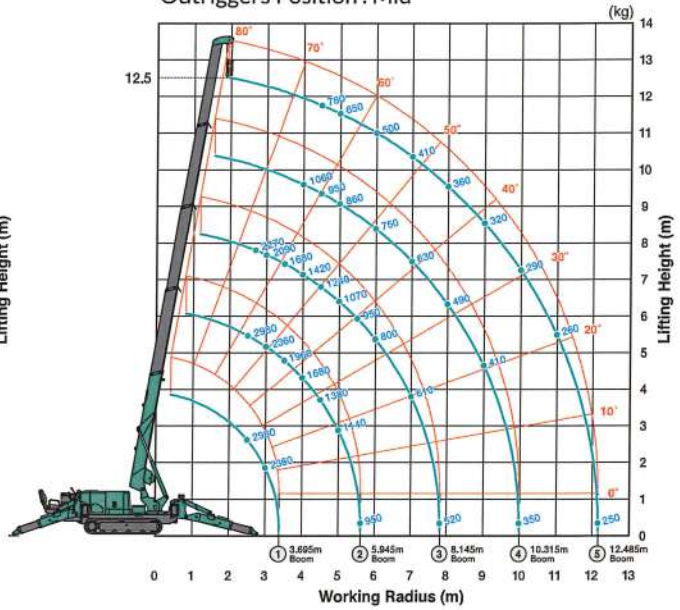
TECHNICAL DATA
Metric(CE)

Working Range Chart

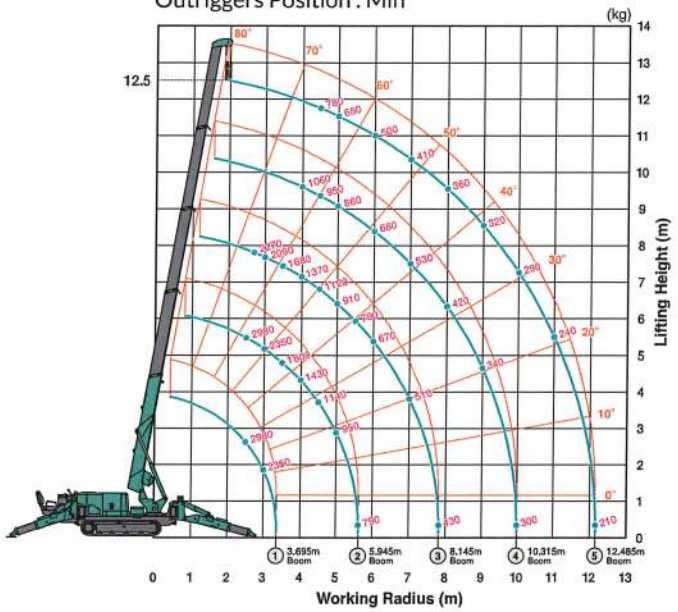
Outriggers Position : Max



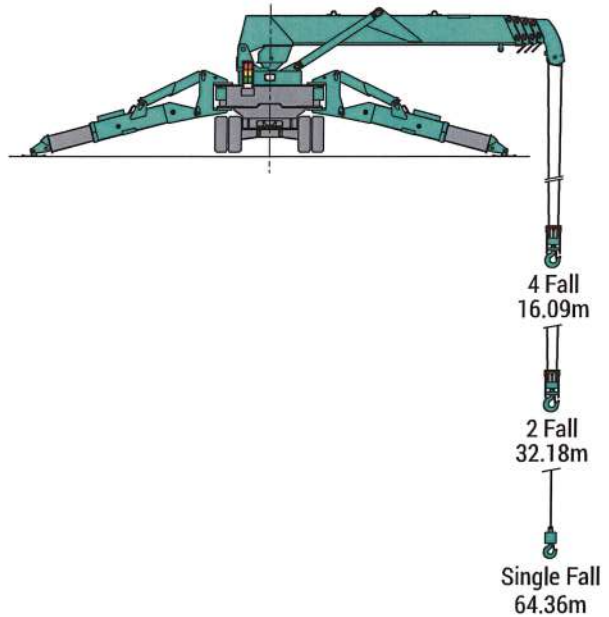
Outriggers Position : Mid



Outriggers Position : Min



Max. Below Grade



Maeda MC405CRM Load Charts

Total rated load (4 falls) Outriggers at Maximum position

4.735m/7.695m boom		10.655m boom		13.565m boom		16.475m boom	
Working radius (m)	Total rated load (kg)	Working radius (m)	Total rated load (kg)	Working radius (m)	Total rated load (kg)	Working radius (m)	Total rated load (kg)
< 2.7	3830	3.5	3030	4.0	2230	5.0	1130
3.5	3030	4.0	2580	4.5	1930	5.5	980
4.0	2580	5.0	2030	5.0	1730	6.0	910
5.0	2030	6.0	1680	6.0	1400	7.0	760
6.0	1680	7.0	1380	7.0	1180	8.0	650
7.0	1380	8.0	1130	8.0	1030	9.0	600
7.25	1330	9.0	880	9.0	930	10.0	550
		10.2	580	10.0	830	11.0	490
				11.0	690	12.0	440
				12.0	530	13.0	380
				13.1	430	14.0	320
						15.0	260
						16.0	210

Total rated load (4 falls) Outriggers at Intermediate position

4.735m/7.695m boom		10.655m boom		13.565m boom		16.475m boom	
Working radius (m)	Total rated load (kg)	Working radius (m)	Total rated load (kg)	Working radius (m)	Total rated load (kg)	Working radius (m)	Total rated load (kg)
< 2.7	3830	3.5	3030	4.0	2230	5.0	1130
3.5	3030	4.0	2580	4.5	1830	5.5	980
4.0	2580	5.0	1880	5.0	1630	6.0	910
5.0	1880	6.0	1430	6.0	1330	7.0	730
6.0	1430	7.0	1130	7.0	1080	8.0	630
7.0	1160	8.0	880	8.0	880	9.0	550
7.25	1120	9.0	740	9.0	730	10.0	480
		10.2	490	10.0	530	11.0	430
				11.0	480	12.0	380
				12.0	430	13.0	330
				13.1	330	14.0	280
						15.0	220
						16.0	180

Total rated load (4 falls) Outriggers at Minimum position

4.735m/7.695m boom		10.655m boom		13.565m boom		16.475m boom	
Working radius (m)	Total rated load (kg)	Working radius (m)	Total rated load (kg)	Working radius (m)	Total rated load (kg)	Working radius (m)	Total rated load (kg)
< 2.7	3830	3.5	3030	4.0	2230	5.0	1130
3.5	3030	4.0	2580	4.5	1830	5.5	980
4.0	2580	5.0	1680	5.0	1630	6.0	880
5.0	1680	6.0	1180	6.0	1180	7.0	730
6.0	1180	7.0	880	7.0	830	8.0	530
7.0	930	8.0	730	8.0	680	9.0	450
7.25	780	9.0	580	9.0	550	10.0	420
		10.2	400	10.0	430	11.0	370
				11.0	380	12.0	330
				12.0	350	13.0	280
				13.1	310	14.0	240
						15.0	190
						16.0	150



The Total Rated Load Charts are based on the actual working radius including boom deflection. The weight of the hook (standard 4 fall - 30kg) must be included as part of the load shown in the Total Rated Load Charts.

When using two fall or single fall hooks, use the appropriate four fall Total Rated Load Chart above but with a **maximum load of:** Two Fall - 1930kg, Single Fall - 970kg.

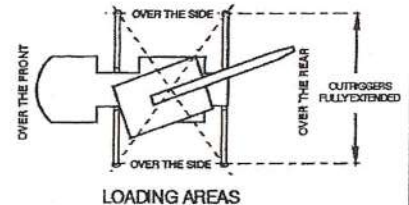


77 skew.

KATO NK-75-v & NK-75M-v HYDRAULIC CRANE CHART 1

TOTAL RATED LOAD IN KILOGRAMS
THIS DOCUMENT SHOULD BE READ IN CONJUNCTION WITH THE A.C.S.

Boom Length Working Radius	OUTRIGGER MAXIMUM EXTENSION (4.4m) WITH THE FRONT JACK DOWN (360°) OUTRIGGER MAXIMUM EXTENSION (4.4m) (REAR AND SIDE) OUTRIGGERS INTERMEDIATE (3.0M), MINIMUM EXTENSION (1.98M) (REAR)				
	6.65m	11.60m	16.55m	21.5m	6.65m ~ 21.5m Boom + Rooster Sheave
2.0	4,900 (7,000)				1,300
2.5	4,900 (7,000)	4,900			1,300
3.0	4,900 (6,100)	4,900	3,900		1,300
3.5	4,900 (5,450)	4,900	3,900		1,300
3.8	4,900	4,650	3,700		1,300
4.0	4,550	4,500	3,600		1,300
4.5	3,750	3,850	3,300	2,000	1,300
5.0	3,150	3,250	3,050	2,000	1,300
5.5	2,700	2,800	2,800	1,850	1,300
6.0	2,350	2,450	2,500	1,700	1,300
7.0		1,900	2,000	1,450	1,300
8.0		1,550	1,600	1,250	1,200
9.0		1,250	1,350	1,100	1,050
10.0		1,050	1,150	1,000	950
11.0		900	950	900	850
12.0			800	820	750
13.0			650	700	600
14.0			550	600	500
15.0			450	520	400
15.9			400	450	350
17.0				370	320
18.0				310	260
19.0				250	200
20.0				200	150
20.7				170	120
Standard Hook	4,900 (7,000kg)				1,300kg
Hook Mass	65kg (75kg)				20kg
Parts of Line	4 (6)				1



NOTES (CAUTION)

- The loads in the above rated load chart are the maximum loads that the crane can support when the crane is set up on solid level ground. These loads include the weight of the hook and other lifting equipment. The loads above the dark line are based on the crane's strength. All other values are based on the crane's stability, and do not exceed 75% of tipping load.
- The working radii as given in the table are the actual values which takes into account the deflection of the boom. Therefore, operate the machine based on the working radius.
- The rated lifting capacities for the rooster sheave are equivalent to the rated lifting capacities for the main boom to a maximum of 1,300kgs. At all times the weight of all lifting equipment in use (including main block suspended from boom head) forms part of the load and must be subtracted from the rated lifting capacity.

HOOK BLOCK	7,000kg	4,900kg	1,300kg
MASS	75kg	65kg	20kg
- If the boom length exceeds the specified value, the rated lifting capacities for the boom length above and below the present boom length should be referred to, and the crane should be operated within the smaller lifting capacity.
- The Standard number of parts of line is shown in the rated lifting capacity table. When the standard number of parts of line is not used, the minimum number of parts of line is determined so that the weight per part will not exceed 1,425kg.
- Without front jack, over front lifting performances is inferior to over side and over rear lifting performances. Great care should be taken when transferring from over side to over front, since there is a danger of overloading. Depending on the extension of the outriggers, taking weight will be different between rear and front.
- Critical boom angles for each boom length are shown on bottom line of lifting capacity table. If the boom angle is lowered to less than the critical boom angle, the machine will tip over without load. Therefore, never lower the boom below these angles.
- The rated lifting capacities do not account for wind on lifted load or boom. Do not operate this machine at wind speed of 10m/sec. or more.
- The machine will tip over or be damaged, if operated with a load exceeding that specified in the rated lifting capacity table, or not conforming to correct handling. If such trouble occurs, the machine will not be warranted.
- Free fall operation should only be performed when the outriggers are extended and the load does not exceed 20% of the rated load.

13T BOBBLE



RATED LIFTING CAPACITY

Based on ISO 4305
Not exceed 75% of static tipping loads

5.3m — 24.0m Boom

Working radius (m)	(4.75m)						(4.3m)						(3.7m)						(2.7m)						(1.64m)										
	Outriggers fully extended (4.75m) - 360° full range						Outriggers intermediately extended (4.3m) - over side						Outriggers intermediately extended (3.7m) - over side						Outriggers intermediately extended (2.7m) - over side						Outriggers completely retracted (1.64m) - over side (H-type outrigger only)										
	5.3m Boom	9.04m Boom	12.78m Boom	16.52m Boom	20.26m Boom	24.0m Boom	5.3m Boom	9.04m Boom	12.78m Boom	16.52m Boom	20.26m Boom	24.0m Boom	5.3m Boom	9.04m Boom	12.78m Boom	16.52m Boom	20.26m Boom	24.0m Boom	5.3m Boom	9.04m Boom	12.78m Boom	16.52m Boom	20.26m Boom	24.0m Boom	5.3m Boom	9.04m Boom	12.78m Boom	16.52m Boom	20.26m Boom	24.0m Boom					
1.5	13.00	6.00	6.00				13.00	6.00	6.00				12.00	6.00	6.00				12.00	6.00	6.00				8.00	6.00	6.00								
1.7	13.00	6.00	6.00				13.00	6.00	6.00				12.00	6.00	6.00				12.00	6.00	6.00				7.00	6.00	6.00								
2.0	12.00	6.00	6.00	5.00			12.00	6.00	6.00	5.00			12.00	6.00	6.00	5.00			12.00	6.00	6.00	5.00			5.60	5.40	5.00	4.70							
2.5	10.00	6.00	6.00	5.00			10.00	6.00	6.00	5.00			10.00	6.00	6.00	5.00			8.50	6.00	6.00	5.00			3.80	3.80	3.60	3.50							
3.0	8.20	6.00	6.00	5.00	4.70		8.20	6.00	6.00	5.00	4.70		8.20	6.00	6.00	5.00	4.70		6.00	6.00	6.00	5.00	4.70		2.80	2.80	2.70	2.70	2.60						
3.5	7.00	6.00	6.00	5.00	4.70	3.20	7.00	6.00	6.00	5.00	4.70	3.20	7.00	6.00	6.00	5.00	4.70	3.20	4.70	4.70	4.60	4.50	4.40	3.20	2.10	2.10	2.00	2.10	2.10	2.10					
4.0	6.10	6.00	6.00	5.00	4.70	3.20	6.10	6.00	6.00	5.00	4.70	3.20	6.10	6.00	6.00	5.00	4.70	3.20	3.70	3.70	3.70	3.70	3.20	3.20	1.60	1.60	1.55	1.70	1.70	1.75					
4.5		5.50	5.40	5.00	4.50	3.20		5.50	5.40	5.00	4.50	3.20		5.10	5.10	5.00	4.50	3.20		3.00	3.00	3.10	3.10	3.00		1.25	1.20	1.40	1.40	1.45					
5.0		5.00	4.90	4.60	4.05	3.20		5.00	4.90	4.60	4.05	3.20		4.40	4.40	4.50	4.05	3.20		2.40	2.40	2.60	2.70	2.70		0.95	0.95	1.10	1.20	1.25					
5.5		4.50	4.40	4.20	3.70	3.20		4.50	4.40	4.20	3.70	3.20		3.80	3.70	3.90	3.70	3.20		2.00	2.00	2.20	2.30	2.30		0.75	0.75	0.90	1.00	1.05					
6.0		4.10	4.00	3.80	3.40	3.00		4.10	4.00	3.80	3.40	3.00		3.20	3.20	3.40	3.40	3.00		1.70	1.70	1.85	2.00	2.05		0.60	0.55	0.75	0.80	0.90					
6.5		3.70	3.65	3.50	3.15	2.80		3.65	3.60	3.50	3.15	2.80		2.80	2.75	2.95	3.05	2.75		1.40	1.40	1.60	1.70	1.75		0.40	0.35	0.60	0.65	0.75					
7.0		3.35	3.30	3.20	2.90	2.60		3.20	3.15	3.20	2.90	2.60		2.40	2.35	2.55	2.70	2.50		1.20	1.20	1.40	1.50	1.55		0.25		0.45	0.55	0.60					
8.0		2.70 (7.7m)	2.90	2.70	2.50	2.25		2.65 (7.7m)	2.45	2.60	2.50	2.25		1.95 (7.7m)	1.80	2.00	2.10	2.15		0.80 (7.7m)	0.85	1.05	1.15	1.20											
9.0			2.25	2.30	2.20	1.95			1.90	2.10	2.20	1.95			1.40	1.60	1.70	1.75			0.60	0.80	0.90	0.95											
10.0			1.80	2.05	1.95	1.75			1.50	1.70	1.85	1.75			1.05	1.25	1.35	1.45			0.35	0.55	0.65	0.75											
11.0			1.45	1.70	1.75	1.55			1.20	1.40	1.55	1.55			0.80	1.00	1.10	1.20				0.40	0.50	0.60											
12.0			1.35 (11.4m)	1.40	1.50	1.40			1.10 (11.4m)	1.15	1.30	1.35			0.70 (11.4m)	0.80	0.90	1.00				0.25	0.35	0.45											
13.0				1.15	1.30	1.25				0.95	1.10	1.15				0.65	0.75	0.85					0.20	0.30											
14.0				0.95	1.10	1.15				0.80	0.90	1.00				0.50	0.60	0.70						0.20											
15.0				0.80	0.90	1.00				0.65	0.75	0.85				0.40	0.50	0.55																	
16.0					0.79	0.85					0.65	0.70					0.40	0.45																	
17.0					0.68	0.74					0.55	0.60					0.30	0.35																	
18.0					0.58	0.64					0.45	0.50					0.30																		
19.0					0.51 (18.8m)	0.55					0.35 (18.8m)	0.40																							
20.0						0.47						0.35																							
21.0						0.41						0.30																							
22.0						0.35						0.25																							
22.5						0.32																													
Critical boom angle																																			
Standard hook	For 13 ton						For 13 ton						For 13 ton						For 13 ton						For 13 ton										
Hook mass	90kg						90kg						90kg						90kg						90kg										
Parts of line	8	4	4	4	4	4	8	4	4	4	4	4	8	4	4	4	4	4	8	4	4	4	4	4	8	4	4	4	4	4	4	4	4		

(Unit: Metric ton)

GR-200EX RATED LIFTING CAPACITIES

ON OUTRIGGERS FULLY EXTENDED 5.2 m SPREAD 360° ROTATION (Unit: x 1,000 kg)						
B \ A	6.5	10.7	14.9	19.1	23.3	27.5
2.5	20.0	12.0	9.0	7.0		
3.0	16.0	12.0	9.0	7.0		
3.5	14.0	12.0	9.0	7.0	5.0	3.5
4.0	12.5	12.0	9.0	7.0	5.0	3.5
4.5	11.7	11.1	9.0	6.6	4.95	3.5
5.0	(4.4m)	10.25	8.9	6.35	4.7	3.5
5.5		9.4	8.2	6.3	4.4	3.35
6.0		8.8	7.6	6.2	4.2	3.2
7.0		6.75	6.5	5.8	4.0	2.95
8.0		5.05	4.95	5.15	3.9	2.8
9.0		4.35	3.9	4.3	3.7	2.75
10.0		(8.6m)	3.1	3.45	3.3	2.65
11.0			2.5	2.85	3.05	2.4
12.0			2.0	2.35	2.65	2.2
13.0			1.7	1.95	2.2	2.05
14.0			(12.8m)	1.6	1.85	1.9
15.0				1.35	1.55	1.7
16.0				1.15	1.3	1.45
17.0				0.95	1.1	1.25
18.0					0.95	1.1
19.0					0.75	0.95
20.0					0.65	0.8
22.0					0.5	0.5
24.0					(21.2m)	0.35

ON OUTRIGGERS MIDDLE EXTENDED 4.8 m SPREAD 360° ROTATION (Unit: x 1,000 kg)						
B \ A	6.5	10.7	14.9	19.1	23.3	27.5
2.5	20.0	12.0	9.0	7.0		
3.0	16.0	12.0	9.0	7.0		
3.5	14.0	12.0	9.0	7.0	5.0	3.5
4.0	12.5	12.0	9.0	7.0	5.0	3.5
4.5	11.7	11.1	9.0	6.6	4.95	3.5
5.0	(4.4m)	10.2	8.9	6.35	4.7	3.5
5.5		9.05	8.2	6.3	4.4	3.35
6.0		7.65	7.2	6.2	4.2	3.2
7.0		5.6	5.6	5.65	4.0	2.95
8.0		4.3	4.25	4.6	3.9	2.8
9.0		3.7	3.35	3.75	3.7	2.75
10.0		(8.6m)	2.65	3.05	3.25	2.65
11.0			2.1	2.5	2.7	2.4
12.0			1.65	2.05	2.25	2.2
13.0			1.35	1.65	1.85	2.05
14.0			(12.8m)	1.3	1.55	1.75
15.0				1.05	1.3	1.45
16.0				0.85	1.1	1.25
17.0				0.7	0.9	1.05
18.0					0.75	0.9
19.0					0.6	0.75
20.0					0.5	0.6
22.0						0.4

A: Boom length (m)

B: Load radius (m)

	RC (KG) LESS THAN 10 DEG ARTICULATION
	RC (KG) GREATER THAN 10 DEG ARTICULATION
	BOOM ANGLE OR (RADIUS AT 0 DEG BOOM ANGLE)

Mass of slings & hook block to be added to load
Read and understand warning notes before operating crane
Loads above bold red line are structural

RADIUS	BOOM LENGTH (m)																	
	5.67	6.00	6.50	7.00	7.50	8.00	8.50	9.00	9.50	10.00	10.50	11.00	11.50	12.00	12.50	13.00	13.50	13.85
1.6	16800	16250	15450	14900														
	48	51	54	57														
2.0	16800	16800	16500	15700	15100	14700	14350											
	42	46	50	53	56	58	60											
2.5	13900	13900	13900	13850	13850	13850	13850	13200	13000									
	34	39	44	48	51	54	56	58	60									
3.0	11450	11450	11450	11400	11400	11400	11400	11400	11400	11150	10250							
	9950	9950	9950	9950	9950	9950	9900	9900	9900	9900	9900							
3.5	9650	9650	9650	9650	9650	9650	9650	9650	9650	9650	9500	8150	7500					
	8	20	29	36	41	45	48	51	53	55	57	59	60					
4.0	9450	8550	8350	8350	8350	8350	8350	8350	8300	8300	8300	7600	7000	6700	6450			
	8200	7450	7250	7250	7250	7250	7250	7250	7200	7200	7200	7200	7000	6700	6450			
4.5	(3.57)	(3.90)	19	28	35	39	43	47	49	52	54	56	57	59	60			
			7500	7300	7300	7300	7300	7300	7300	7300	7300	7150	6550	6250	6050	5800	5650	
5.0			6500	6350	6350	6350	6350	6350	6300	6300	6300	6300	6300	6250	6050	5800	5650	
			(4.40)	19	27	34	38	42	45	48	50	52	54	56	58	59	60	
6.0				6650	6500	6500	6500	6500	6500	6500	6500	6500	6500	6500	6500	6500	6500	
				(4.90)	18	27	33	37	41	44	47	49	51	53	55	56	58	59
7.0					5950	5350	5250	5250	5250	5250	5250	5250	5250	5250	5050	4850	4700	4600
					(5.40)	17	25	31	35	39	42	45	47	49	51	53	54	
8.0						4850	4450	4400	4400	4400	4400	4400	4400	4400	4350	4200	3950	
						(6.40)	16	24	29	34	37	40	43	45	47	48		
9.0							4200	3800	3750	3750	3750	3750	3750	3750	3750	3750	3750	
							(6.90)	15	23	28	32	36	38	41	43			
10.0								4100	3750	3700	3700	3700	3700	3700	3700	3700	3600	
								(7.40)	15	22	27	31	34	36	38	41	43	
11.0									3500	3200	3150	3150	3150	3150	3150	3150	3150	
									(8.40)	15	23	28	32	36	38	41	43	
11.75										2950	2750	2700	2700	2700	2700	2700	2700	
										(8.90)	15	22	27	31	34	36	38	41
											3000	2800	2800	2800	2800	2800	2800	
											2550	2400	2350	2350	2350	2350	2350	
											(9.40)	14	21	26	29			
												2650	2500	2450	2450	2450	2450	
												2200	2100	2050	2050	2050	2050	
												(10.40)	13	18				
													2350	2250	2250	2250	2250	
													(11.40)	13	18			
														1950	1850	1850	1850	
																		(11.75)

LOAD CHART

MAC 25-4

Fallblock, Front Counterweight, 3rd Boom Retracted



Pick & Carry 0.4m/s (1.44 km/h); On rubber 66.6%



6.1-14.0 m

AS 1418.5

		Boom Length (m)														
		6.1	6.5	7.0	7.5	8.0	8.5	9.0	9.5	10.0	11.0	12.0	13.0			14.0
m	kg	kg	kg	kg	kg	kg	kg	kg	kg	kg	kg	kg	kg	kg	m	
1.4	24000	23950	23950	23950	23900	23900	23550								1.4	
	23450	23450	23400	23400	23400	23350	23350									
	49°	52°	56°	58°	61°	63°	65°									
2.0	20100	20050	20050	20000	19950	19950	19900	19850	19850						2.0	
	18050	18000	17950	17900	17900	17850	17850	17800	17800							
	41°	45°	49°	52°	55°	58°	60°	62°	64°							
2.5	15800	15750	15750	15700	15700	15650	15650	15600	15600	15550					2.5	
	15100	15100	15050	15050	15000	15000	14950	14950	14950	14900						
	14150	14100	14100	14050	14050	14000	14000	13950	13950	13900						
	33°	38°	43°	47°	51°	54°	56°	58°	60°	64°						
3.0	12900	12900	12850	12850	12850	12800	12800	12750	12750	12700	12700				3.0	
	12350	12350	12300	12300	12300	12250	12250	12200	12200	12150	12150					
	11500	11500	11500	11450	11450	11450	11400	11400	11350	11350	11300					
	22°	30°	36°	41°	46°	49°	52°	54°	57°	60°	64°					
3.5	10850	10800	10800	10800	10800	10750	10750	10750	10700	10700	10650	10650			3.5	
	10350	10350	10350	10350	10300	10300	10300	10250	10250	10200	10200	10200				
	9650	9650	9650	9600	9600	9600	9550	9550	9550	9500	9500	9100				
	(3.5)	19°	28°	35°	40°	44°	47°	50°	53°	57°	61°	63°				
4.0		9800	9250	9250	9250	9250	9250	9200	9200	9150	9150	9150	9100		4.0	
		9200	8850	8850	8850	8850	8800	8800	8800	8750	8750	8700	8700			
		8550	8250	8250	8250	8200	8200	8200	8200	8150	8150	8050	8150			
		(3.9)	18°	27°	34°	39°	43°	46°	49°	54°	58°	61°	63°			
5.0			8300	7300	7100	7100	7100	7050	7050	7050	7000	7000	7000		5.0	
			7950	6950	6750	6750	6750	6750	6750	6750	6700	6700	6650			
			7350	6450	6250	6250	6250	6250	6250	6200	6200	6200	6050			
			(4.4)	(4.9)	17°	26°	32°	37°	40°	46°	51°	55°	58°			
6.0				6450	5750	5650	5650	5650	5650	5600	5600	5600	5600		6.0	
				6150	5500	5350	5350	5350	5350	5350	5300	5300	5300			
				5700	5050	4950	4950	4950	4950	4900	4900	4900	4900			
				(5.4)	(5.9)	16°	24°	30°	38°	44°	49°	53°				
7.0							5200	4700	4600	4600	4600	4600	4550		7.0	
							4950	4450	4350	4350	4350	4350	4350			
							4550	4100	4000	4000	4000	4000	3950			
							(6.4)	(6.9)	15°	29°	37°	42°	47°			
8.0										4250	3800	3800	3800		8.0	
										4050	3600	3600	3600			
										3700	3300	3300	3300			
										(7.4)	14°	27°	35°	41°		
9.0											3550	3200	3200		9.0	
											3350	3050	3050	3000		
											3050	2750	2750	2750		
											(8.4)	14°	26°	34°		
10												3000	2750	2750	10	
												2850	2550	2550		
												2550	2300	2300		
												(9.4)	13°	25°		
11													2550	2350	11	
													2400	2200		
													2150	1950		
													(10.4)	13°		
12														2200	12	
														2050		
														1850		
														(11.4)		

- RC (kg) at 0° articulation
- RC (kg) at 25° articulation
- RC (kg) at 40° articulation
- Boom angle
- Radius at 0° boom angle
- Loads above red line are structural

Notes to lifting capacity

Lifting capacities do not exceed 66.6% of tipping load. Weight of hook blocks and slings is part of the load, and is to be deducted from the capacity ratings. Consult Rated Capacity Manual for further details.

Data published herein is intended as a guide only and shall not be construed to warrant applicability for lifting purposes. Crane operation is subject to the computer charts and Rated Capacity Manual both supplied with the crane.

50T SLEW

Traglasten / Lifting capacities

Forces de levage / Portate

Tablas de carga / Грузоподъемность

T



	8,2 m	11 m	13,8 m	16,5 m	19,3 m	22,1 m	24,9 m	27,7 m	30,4 m	33,2 m	36 m				
3	44,4	42,9	40	33,5	30	25,5	20,4					3			
3,5	40,5	40,3	38,7	33,8	29,5	25,2	19,9					3,5			
4	36,9	36,6	36	33,6	29,1	24,9	19,6	15,8				4			
4,5	33,1	33,4	32,8	31,6	28,7	24,4	19,6	15,7	13			4,5			
5	29,5	29,9	29,6	28,9	27,8	24	19,3	15,7	13	10,6		5			
6		24,2	24,3	24,3	23,6	22,7	18,6	15,2	12,9	10,5	8,2	6			
7		19,7	19,9	19,9	19,6	18,5	17,4	14,5	12,5	10,3	8,1	7			
8		16	16,3	16,7	16,3	15,4	14,6	13,6	11,9	9,9	8	8			
9			13,6	13,7	13,6	13,1	12,5	12,3	11,2	9,5	7,8	9			
10			11,4	11,5	11,4	11,2	11,3	10,7	10,2	9	7,6	10			
11			9,8	9,9	9,8	10	9,9	9,4	9	8,6	7,3	11			
12				8,6	8,6	8,7	8,6	8,3	8,2	7,9	7,1	12			
13				7,6	7,8	7,7	7,5	7,6	7,4	7,1	6,8	13			
14				6,8	7	6,9	6,8	6,8	6,6	6,6	6,4	14			
15					6,3	6,1	6,2	6,1	6,1	6,1	5,8	15			
16					5,6	5,6	5,6	5,6	5,5	5,5	5,3	16			
17						5,2	5,1	5,1	5	4,9	4,7	17			
18						4,8	4,7	4,7	4,5	4,4	4,2	18			
19						4,4	4,3	4,3	4,2	4,1	3,9	19			
20							3,9	3,9	3,8	3,7	3,5	20			
21								3,6	3,6	3,5	3,2	21			
22								3,4	3,3	3,2	2,9	22			
23									3,1	3	2,9	23			
24									2,9	2,7	2,7	24			
25									2,7	2,5	2,5	25			
26										2,3	2,3	26			
27										2,2	2,1	27			
28										2	1,9	28			
29											1,8	29			
30											1,6	30			
31												1,3	31		
32													1,2	32	
33														1,1	33

t_260_001_00021_00_000

60T SLEW.

Traglasten

Lifting capacities

Forces de levage • Portate

Tablas de carga • Грузоподъемность

T



m	m												m	
	10,3 m	13,8 m	17,3 m	20,7 m	24,2 m	27,7 m	31,2 m	34,6 m	38,1 m	41,6 m	45,1 m	48 m		
2,1	60												2,1	
2,4	58,8												2,4	
2,5	58,2												2,5	
3	54,6	42,3	41,5	40,4	34,1	29,6	22,7						3	
3,5	49,9	42,3	42,2	40,7	34,4	30	23,2						3,5	
4	44,5	40,5	40,2	38,1	34,8	30,2	23,6	18,6					4	
4,5	39,8	37,2	36,9	34,9	33,3	29,9	24	18,9	14,6				4,5	
5	36,4	34,2	34,3	32,9	31,1	29,6	24,1	19,1	14,8				5	
6	31,6	28,7	29,1	29,3	28,2	26,6	23,7	19,2	15	11,7			6	
7	26,5	24,1	24,6	24,8	24,8	23,9	22,9	18,7	15,1	12	9,5	7,2	7	
8			20,9	21,1	21,3	20,9	19,7	17,7	14,8	12,1	9,6	7,4	6,1	8
9			17,8	18,3	18,5	18	17	15,9	14,2	11,9	9,7	7,4	6,2	9
10			15,2	15,8	15,9	15,7	14,9	14,3	13,3	11,5	9,5	7,4	6,3	10
11			13,3	13,7	13,7	13,6	13,1	12,6	12,2	11	9,2	7,3	6,3	11
12				11,9	12	11,9	11,7	11,6	11,1	10,4	8,8	7,1	6,2	12
13				10,6	10,6	10,5	10,5	10,5	10,2	9,7	8,5	6,9	6,1	13
14				9,4	9,5	9,4	9,7	9,4	9,3	8,7	8,2	6,7	5,9	14
15					8,5	8,9	8,7	8,5	8,4	8	7,8	6,5	5,8	15
16					7,7	8,1	7,9	7,7	7,6	7,6	7,2	6,3	5,7	16
17					7	7,3	7,2	7	7,1	7	6,6	6,1	5,5	17
18					6,8	6,7	6,6	6,6	6,5	6,4	6,2	5,9	5,4	18
19						6,2	6	6,2	6	5,9	5,8	5,5	5,2	19
20						5,7	5,7	5,7	5,5	5,5	5,4	5	4,9	20
21						5,3	5,4	5,2	5,2	5,1	5	4,6	4,5	21
22							5	4,9	4,9	4,7	4,6	4,2	4,2	22
23							4,7	4,5	4,5	4,4	4,2	3,9	3,9	23
24							4,3	4,2	4,2	4	3,9	3,6	3,6	24
25							4,1	3,9	3,9	3,7	3,6	3,3	3,3	25
26								3,7	3,7	3,5	3,3	3,1	3	26
27								3,5	3,4	3,2	3,1	2,8	2,8	27
28								3,3	3,2	3	2,9	2,6	2,6	28
29									3	2,8	2,7	2,4	2,4	29
30									2,8	2,6	2,5	2,3	2,2	30
31									2,6	2,4	2,3	2,1	2,1	31
32									2,5	2,3	2,1	1,9	1,9	32
33										2,1	2	1,7	1,8	33
34										2	1,8	1,6	1,6	34
35										1,8	1,7	1,5	1,5	35
36											1,6	1,3	1,3	36
37											1,4	1,2	1,2	37
38											1,3	1,1	1,1	38
39											1,2	1	1	39
40												0,9	0,9	40

* nach hinten · over rear · sur arrière · sul posteriore · hacia atrás · стрела повернута назад

t_250_00101_00_000 / t_250_00501_00_000

80T SLEW.

Load charts • Traglasten • Capacités de levage Capacidades • Tabelle di portata • Таблицы грузоподъемности

Telescopic boom • Teleskopausleger • Flèche principale • Pluma telescópica
Braccio telescopico • Телескопическая стрела



12,8 - 60,0 m



7,6 m



360°



17,1 t



EN 13000

m	12,8	18,0	23,3	27,9	32,6	37,0	40,3	43,5	47,2	51,1	54,8	57,9	60,0	m
3,0	106,0	105,0	89,5											3,0
4,0	89,0	89,0	86,5	65,0										4,0
5,0	76,0	76,0	75,5	64,0	52,0									5,0
6,0	62,5	63,0	61,0	57,0	51,5	40,0								6,0
7,0	52,5	53,0	51,0	46,0	44,5	40,0	33,0	27,5						7,0
8,0	44,5	46,0	42,0	40,5	38,0	36,5	33,0	27,5	24,0					8,0
9,0	35,5	37,5	37,0	34,5	34,0	31,5	29,5	27,5	24,0	19,1	15,8			9,0
10,0	29,0	31,0	32,0	30,5	29,5	27,0	26,0	25,0	24,0	19,1	15,8	12,7	11,8	10,0
11,0		26,5	27,0	27,5	26,0	24,0	23,5	22,0	21,5	19,1	15,8	12,7	11,8	11,0
12,0		23,0	24,5	24,5	23,0	22,0	21,0	19,9	19,3	18,6	15,8	12,7	11,8	12,0
13,0		20,0	21,5	21,5	20,5	20,5	18,7	18,5	17,5	17,2	15,8	12,7	11,8	13,0
14,0		17,6	18,7	19,0	18,2	18,3	16,8	16,7	16,3	15,8	15,1	12,7	11,8	14,0
15,0		14,3	16,7	16,9	16,5	16,6	16,0	15,4	14,8	14,3	13,7	12,7	11,8	15,0
16,0			14,9	15,1	14,7	15,1	15,0	14,2	13,5	13,0	12,9	12,4	11,8	16,0
18,0			12,0	12,4	11,9	12,5	12,6	12,4	11,5	10,9	10,8	10,4	10,1	18,0
20,0			7,8	10,8	9,7	11,0	10,6	10,5	10,0	9,2	9,2	8,8	8,5	20,0
22,0				9,1	8,0	9,3	8,9	9,0	8,5	7,8	7,8	7,4	7,2	22,0
24,0				7,7	6,7	8,0	7,5	7,7	7,4	6,7	6,7	6,3	6,1	24,0
26,0					5,5	7,0	6,5	6,6	6,3	5,7	5,7	5,4	5,2	26,0
28,0					4,6	6,0	5,8	5,6	5,4	4,7	4,9	4,6	4,4	28,0
30,0					2,3	5,2	5,0	4,8	4,5	3,9	4,1	3,8	3,7	30,0
32,0						4,4	4,3	4,1	3,8	3,2	3,4	3,1	3,0	32,0
34,0							3,5	3,7	3,4	3,2	2,6	2,8	2,4	34,0
36,0								3,1	2,9	2,7	2,1	2,3	2,0	36,0
38,0								2,7	2,4	2,2	1,6	1,8	1,4	38,0
40,0									2,0	1,7	1,2	1,4	0,9	40,0
42,0									1,6	1,4	0,8	1,0		42,0
44,0										1,0				44,0

100T SLEW

Load charts • Traglasten • Capacités de levage Capacidades • Tabelle di portata • Таблицы грузоподъемности

Telescopic boom • Teleskopausleger • Flèche principale • Pluma telescópica
Braccio telescopico • Телескопическая стрела



12,8 - 60,0 m



7,6 m



360°



26,3 t



EN 13000

m	12,8	18,0	23,3	27,9	32,6	37,0	40,3	43,5	47,2	51,1	54,8	57,9	60,0	m
3,0	106,0	106,0	89,5											3,0
4,0	90,0	90,0	86,5											4,0
5,0	77,5	77,5	77,0	34,0	52,0									5,0
6,0	66,5	67,0	66,0	31,0	51,5	40,0								6,0
7,0	56,0	56,5	55,5	28,5	48,5	40,0	33,0	27,5						7,0
8,0	48,0	49,0	48,0	26,5	45,5	39,0	33,0	27,5	24,0					8,0
9,0	42,0	43,5	43,0	24,5	39,0	37,0	32,0	27,5	24,0	19,1	15,8			9,0
10,0	37,0	38,5	37,5	22,5	34,0	33,5	30,5	27,5	24,0	19,1	15,8	12,7	11,8	10,0
11,0		33,5	33,0	21,0	30,0	30,0	28,5	26,5	24,0	19,1	15,8	12,7	11,8	11,0
12,0		29,0	30,0	19,8	28,0	26,5	25,5	25,0	23,0	19,1	15,8	12,7	11,8	12,0
13,0		25,5	26,0	18,7	26,0	24,0	23,0	22,5	22,0	18,9	15,8	12,7	11,8	13,0
14,0		22,5	23,0	17,6	23,5	21,5	21,5	20,0	20,5	18,3	15,8	12,7	11,8	14,0
15,0		19,2	20,5	16,7	21,5	19,7	19,8	18,3	18,4	17,5	15,7	12,7	11,8	15,0
16,0			19,4	15,7	19,3	18,0	18,1	16,7	16,8	16,4	15,2	12,7	11,8	16,0
18,0			16,0	14,3	15,8	16,2	15,3	15,0	14,2	14,1	14,0	12,1	11,8	18,0
20,0			11,3	13,1	13,2	13,7	13,1	13,1	12,7	12,5	12,0	11,3	11,3	20,0
22,0				12,0	11,1	11,6	11,7	11,4	11,2	10,8	10,4	10,4	10,1	22,0
24,0				10,3	9,5	9,9	10,2	10,0	9,7	9,4	9,4	9,0	8,8	24,0
26,0				8,9	8,1	8,6	8,8	8,9	8,4	8,2	8,3	7,9	7,6	26,0
28,0				6,0	7,0	7,8	7,7	7,7	7,4	7,1	7,3	6,9	6,7	28,0
30,0					4,5	7,1	6,7	6,8	6,7	6,1	6,3	6,0	5,8	30,0
32,0						6,1	5,9	5,9	5,9	5,3	5,5	5,2	5,0	32,0
34,0						5,4	5,2	5,3	5,1	4,5	4,7	4,4	4,3	34,0
36,0							4,5	4,7	4,4	3,9	4,0	3,8	3,6	36,0
38,0							4,1	4,1	3,9	3,3	3,5	3,2	3,1	38,0
40,0								3,6	3,3	2,8	3,0	2,7	2,5	40,0
42,0								3,2	2,9	2,3	2,5	2,2	2,1	42,0
44,0									2,5	1,9	2,1	1,8	1,7	44,0
46,0									2,1	1,5	1,7	1,4	1,3	46,0
48,0									1,8	1,2	1,4	1,1	0,9	48,0
50,0											1,0			50,0

Load charts • Traglasten • Capacités de levage
 Capacidades • Tabelle di portata • Таблицы грузоподъемности

Telescopic boom • Teleskopausleger • Flèche principale • Pluma telescópica
 Braccio telescopico • Телескопическая стрела



12,8 - 60,0 m



7,6 m



360°



30,9 t



EN 13000

m	12,8	18,0	23,3	27,9	32,6	37,0	40,3	43,5	47,2	51,1	54,8	57,9	60,0	m
3,0	107,0	106,0	89,5											3,0
4,0	90,5	90,5	86,5	65,0										4,0
5,0	78,0	78,0	77,5	64,0	52,0									5,0
6,0	68,0	69,0	68,0	60,0	51,5	40,0								6,0
7,0	58,0	58,5	57,5	55,0	48,5	40,0	33,0	27,5						7,0
8,0	50,0	50,5	49,5	50,0	45,5	39,0	33,0	27,5	24,0					8,0
9,0	43,5	44,0	44,0	44,0	42,5	37,0	32,0	27,5	24,0	19,1	15,8			9,0
10,0	38,5	39,5	39,0	38,0	37,5	34,5	30,5	27,5	24,0	19,1	15,8	12,7	11,8	10,0
11,0		35,5	35,0	33,5	33,0	32,5	29,0	26,5	24,0	19,1	15,8	12,7	11,8	11,0
12,0		32,0	31,5	31,0	29,5	29,5	27,0	25,0	23,0	19,1	15,8	12,7	11,8	12,0
13,0		28,5	29,0	28,5	26,5	26,5	25,5	24,0	22,0	18,9	15,8	12,7	11,8	13,0
14,0		25,0	25,5	25,5	24,5	24,0	23,0	22,5	21,0	18,3	15,8	12,7	11,8	14,0
15,0		21,5	23,0	22,5	23,0	22,0	21,0	20,5	19,9	17,5	15,7	12,7	11,8	15,0
16,0			20,5	21,0	21,5	20,0	19,5	18,8	18,9	16,7	15,2	12,7	11,8	16,0
18,0			17,7	17,9	17,6	17,0	17,2	15,8	16,1	15,3	14,2	12,1	11,8	18,0
20,0			13,0	15,1	14,8	14,9	14,7	13,8	13,8	13,4	13,2	11,3	11,3	20,0
22,0				12,9	12,6	13,1	12,5	12,8	11,9	11,9	11,8	10,5	10,6	22,0
24,0				11,1	10,8	11,3	10,9	11,0	10,8	10,8	10,3	9,7	9,9	24,0
26,0					9,3	9,8	10,0	9,5	9,6	9,5	9,1	9,0	8,9	26,0
28,0					8,1	8,5	8,8	8,4	8,3	8,2	8,1	8,0	7,8	28,0
30,0					5,6	7,5	7,7	7,7	7,3	7,2	7,3	7,1	6,9	30,0
32,0						6,6	6,8	6,9	6,4	6,3	6,4	6,2	6,1	32,0
34,0							5,8	6,1	6,1	5,8	5,5	5,4	5,2	34,0
36,0								5,4	5,4	5,3	4,8	4,7	4,5	36,0
38,0								4,1	4,8	4,7	4,1	4,3	4,0	38,0
40,0									4,4	4,1	3,6	3,5	3,3	40,0
42,0										3,9	3,6	3,1	2,8	42,0
44,0											3,2	2,6	2,4	44,0
46,0												2,2	2,0	46,0
48,0													1,6	48,0
50,0													1,7	50,0
52,0													1,4	52,0
54,0													0,8	54,0

150T SLEW

Load charts • Traglasten • Capacités de levage Capacidades • Tabelle di portata • Таблицы грузоподъемности

Telescopic boom • Teleskopausleger • Flèche principale • Pluma telescópica
Braccio telescopico • Телескопическая стрела



12,8 - 60,0 m



7,6 m



360°



44,5 t



EN 13000

m	12,8	18,0	23,3	27,9	32,6	37,0	40,3	43,5	47,2	51,1	54,8	57,9	60,0	m
3,0	150,0*													3,0
3,0	108,0	107,0	89,5											3,0
4,0	91,5	91,5	86,5	65,0										4,0
5,0	79,0	79,0	78,5	64,0	52,0									5,0
6,0	69,0	69,5	69,0	60,0	51,5	40,0								6,0
7,0	61,5	62,0	61,0	55,0	48,5	40,0	33,0	27,5						7,0
8,0	54,5	55,0	54,0	50,5	45,5	39,0	33,0	27,5	24,0					8,0
9,0	47,5	48,5	47,5	47,0	42,5	37,0	32,0	27,5	24,0	19,1	15,8			9,0
10,0	42,0	43,0	42,0	42,5	39,5	34,5	30,5	27,5	24,0	19,1	15,8	12,7	11,8	10,0
11,0		38,5	37,5	38,0	37,0	32,5	29,0	26,5	24,0	19,1	15,8	12,7	11,8	11,0
12,0		34,5	34,5	34,5	34,5	30,5	27,0	25,0	23,0	19,1	15,8	12,7	11,8	12,0
13,0		32,0	31,5	31,0	32,0	29,0	25,5	24,0	22,0	18,9	15,8	12,7	11,8	13,0
14,0		29,5	29,0	28,5	29,0	27,5	24,0	23,0	21,0	18,3	15,8	12,7	11,8	14,0
15,0		26,0	26,5	26,0	26,5	26,0	22,5	21,5	19,9	17,5	15,7	12,7	11,8	15,0
16,0			24,5	24,0	24,5	24,5	21,5	20,5	18,9	16,7	15,2	12,7	11,8	16,0
18,0			22,0	21,5	21,0	22,0	19,2	18,5	17,3	15,3	14,2	12,1	11,8	18,0
20,0			16,9	18,4	17,8	18,6	17,3	16,7	15,8	14,1	13,2	11,3	11,3	20,0
22,0				15,7	16,1	16,0	15,5	15,1	14,5	13,0	12,3	10,5	10,6	22,0
24,0				13,6	14,4	13,8	14,2	13,5	13,4	12,0	11,4	9,7	9,9	24,0
26,0					12,7	12,1	12,6	11,7	12,2	11,1	10,5	9,0	9,2	26,0
28,0					11,2	11,3	11,1	10,5	10,7	10,3	9,8	8,4	8,5	28,0
30,0					7,7	10,4	9,8	9,9	9,4	9,4	9,1	7,7	7,9	30,0
32,0						9,3	8,7	9,0	8,4	8,4	8,3	7,2	7,4	32,0
34,0						7,4	7,8	8,1	7,6	7,4	7,8	6,8	6,9	34,0
36,0							7,3	7,3	7,1	6,9	7,0	6,4	6,4	36,0
38,0							6,2	6,5	6,6	6,5	6,2	6,1	6,0	38,0
40,0								5,9	5,9	5,8	5,6	5,7	5,5	40,0
42,0								5	5,4	5,2	5,0	5,1	5,0	42,0
44,0									4,8	4,7	4,6	4,6	4,5	44,0
46,0									3,7	4,3	4,3	4,1	4,0	46,0
48,0									3,3	3,8	4,0	3,7	3,6	48,0
50,0											3,5	3,3	3,1	50,0
52,0											3,2	2,9	2,7	52,0
54,0												2,5	2,4	54,0
56,0													2,1	56,0

* Over rear with special equipment • Nach hinten mit Sonderausüstung • En arrière avec équipement special • Por la parte trasera con equipo especial
Sul posteriore con equipaggiamento speciale • Над задней частью со специальным оборудованием